



**FLEMING  
PROPERTY  
MANAGEMENT**

**SPECIAL FEATURES**

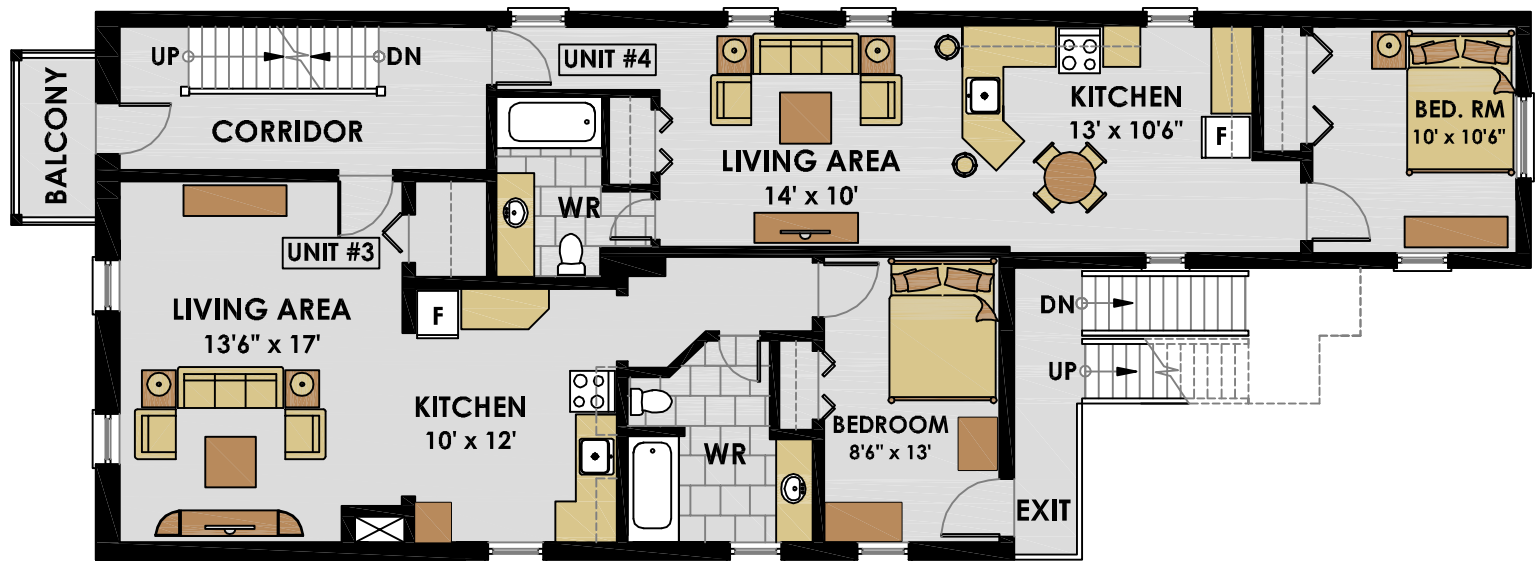
- Close to Bus Routes
- Close to Downtown
- Heritage Building
- Outdoor Parking
- Services (extra)
- Professional Tenant Services
- Quiet Street
- Security Intercom
- Washer/ Dryer on site

**EXTERIOR VIEW**



# UPSCALE URBAN LIVING BYWARD MARKET

189 GIGUES AVENUE



**SECOND FLOOR**  
**UNIT # 3 ONE BEDROOM (520 s.f)**  
**UNIT # 4 ONE BEDROOM (575 s.f)**