

**SPECIAL FEATURES**

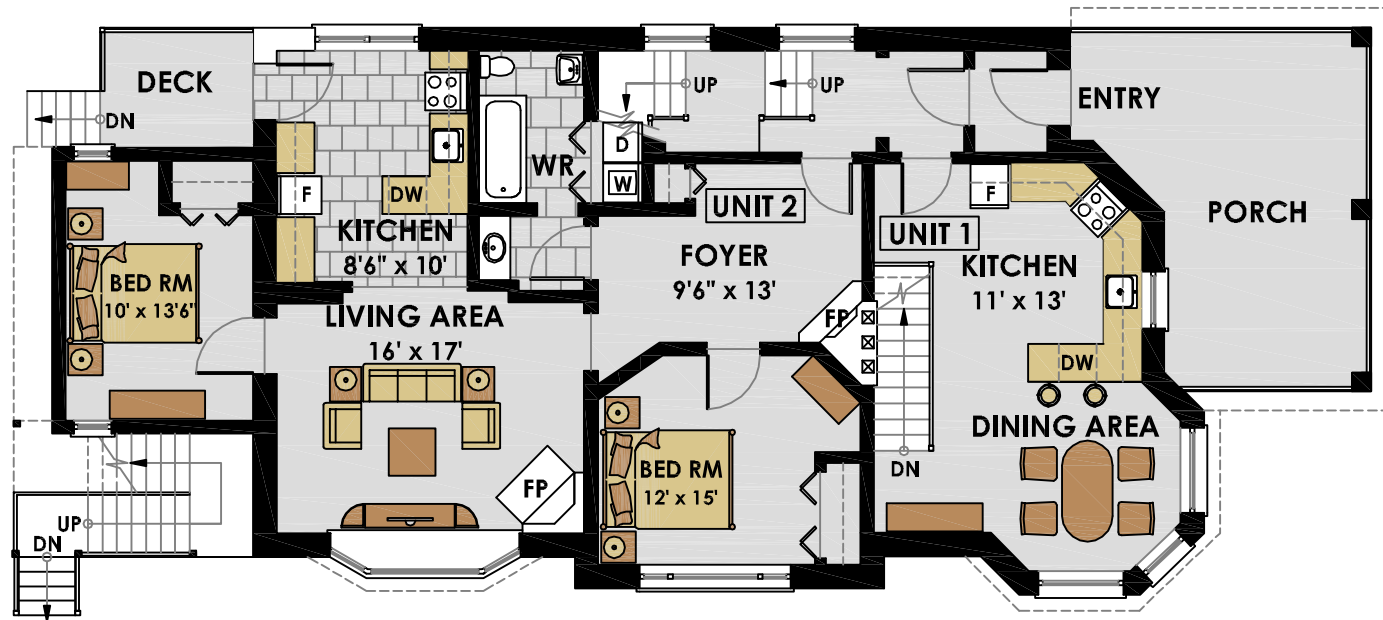
- Close to Bus Routes
- Close to Downtown
- Heritage Building
- Outdoor Parking
- Services (extra)
- Professional Tenant Services
- Security Intercom

**FRONT VIEW**



# UPSCALE URBAN LIVING CENTRETOWN/ GOLDEN TRIANGLE

409 QUEEN STREET



**GROUND FLOOR**

**UNIT # 1 TWO BEDROOM (1100 s.f) BASEMENT & GROUND LEVELS**

**UNIT # 2 TWO BEDROOM (850 s.f)**